

How to install "Easy Home Control KIT - 1"

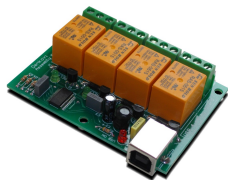
Installation Guide
Date: 06 June 2013



1. About this document

This document is about how to install [Denkovi "Easy Home Control KIT - 1"](#)
Denkovi Assembly Electronics LTD reserves the right to change the information this document without any notification.

2. The KIT includes



**USB 4 Relay Board
- 1 pcs**



**USB to One Wire
adapter - 1 pcs**

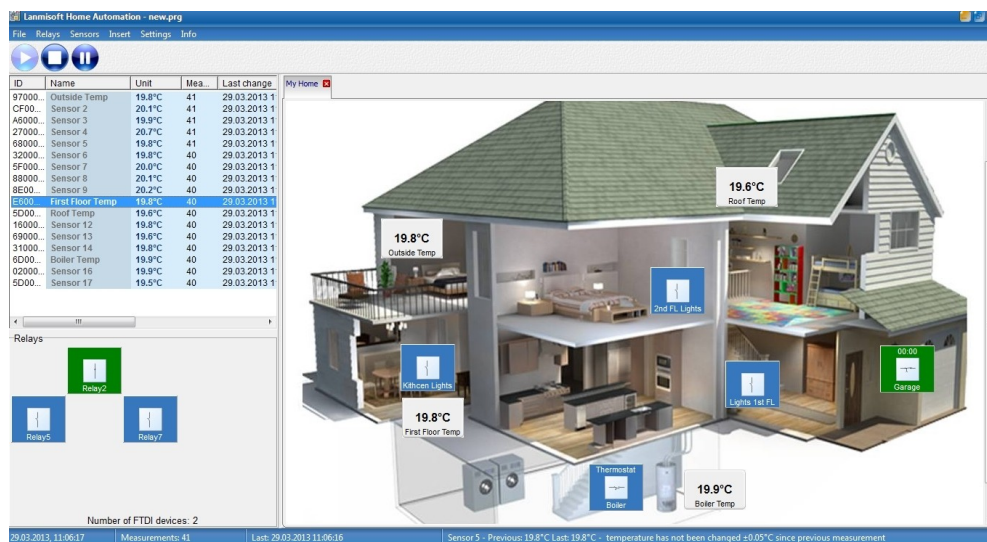


**DS18S20 Sensor -
4 pcs**



**USB Cables - 2 pcs
(optional)**

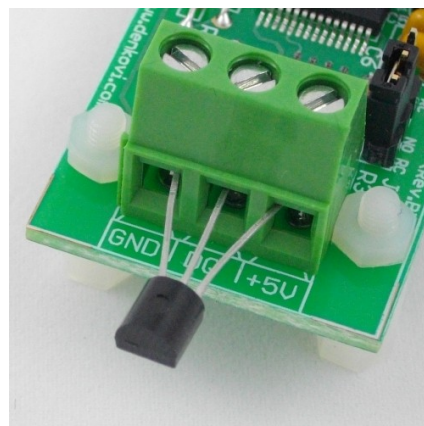
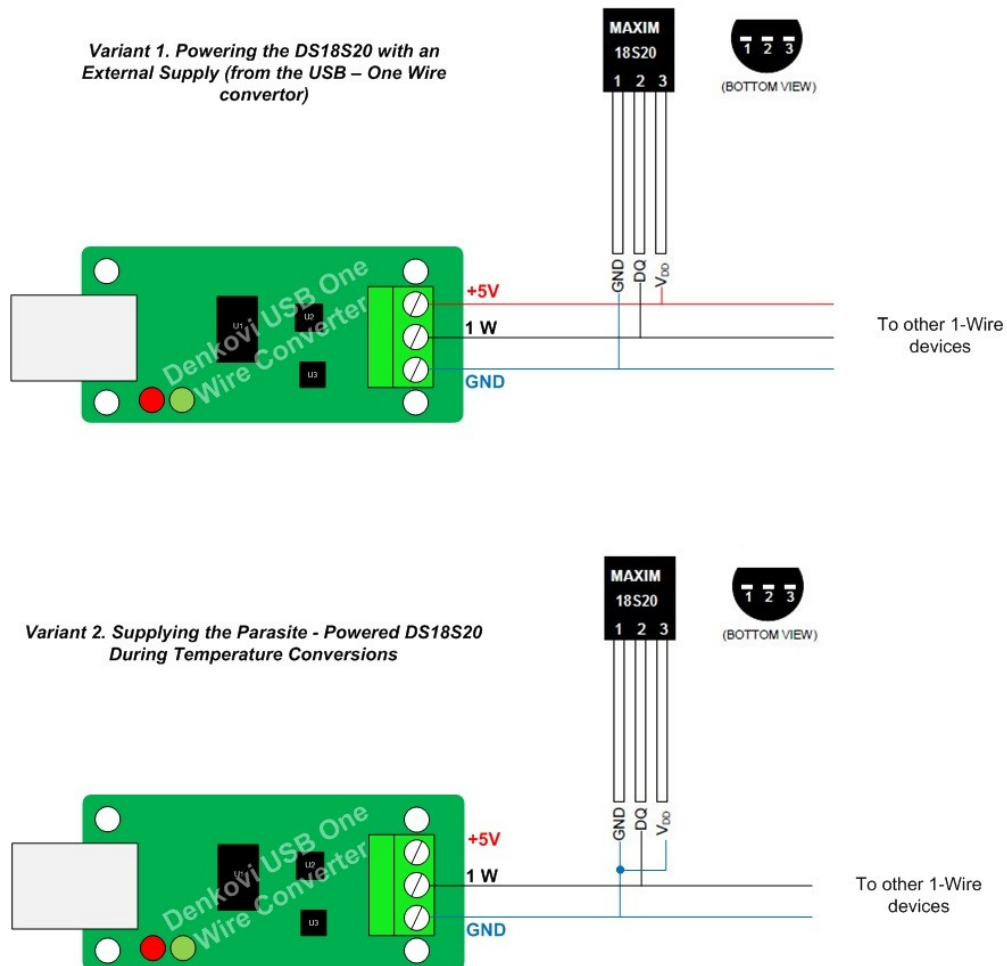
+



One license for PC Home Automation Software

3. Connect the USB One Wire adapter screw terminal to the One Wire network

For example bellow it is shown how to connect single DS18S20 temperature sensor to the adapter.



4. Connect the USB One Wire adapter to the PC via USB cable

Once the USB One Wire Adapter is recognized, its drivers must be installed. If this is not done automatically the drivers must be downloaded manually. Its chip set is FTDI FT232RL based, so the drivers must be downloaded from here: <http://www.ftdichip.com/Drivers/VCP.htm> and after that installed. For installation guides - <http://www.ftdichip.com/Support/Documents/InstallGuides.htm>

5. Connect the USB Four Relay Board to the PC via USB cable

Because the FTDI drivers should be already installed, now the USB relay board is installed correctly and should work properly after connecting to PC USB port.

6. Check in the Control Panel if the FTDI drivers are installed correctly

Check if the both FTDI base devices (USB One Wire adaptor and USB Relay Board) are shown at your Device Manager on the Control Panel. Note that it is recommend the USB One wire adaptor to be with Com Port number less than 10 because some one wire applications can not work with higher com port numbers.



In this tutorial, the both FTDI devices are shown as USB Serial Port in the Device Manager.

7. Install the One Wire drivers

Download and install the One Wire drivers from here:

<http://www.maximintegrated.com/products/ibutton/software/tmex/index.cfm>

8. Download and install the Home Automation Software by Lanmisoft

You can download the software from this link:

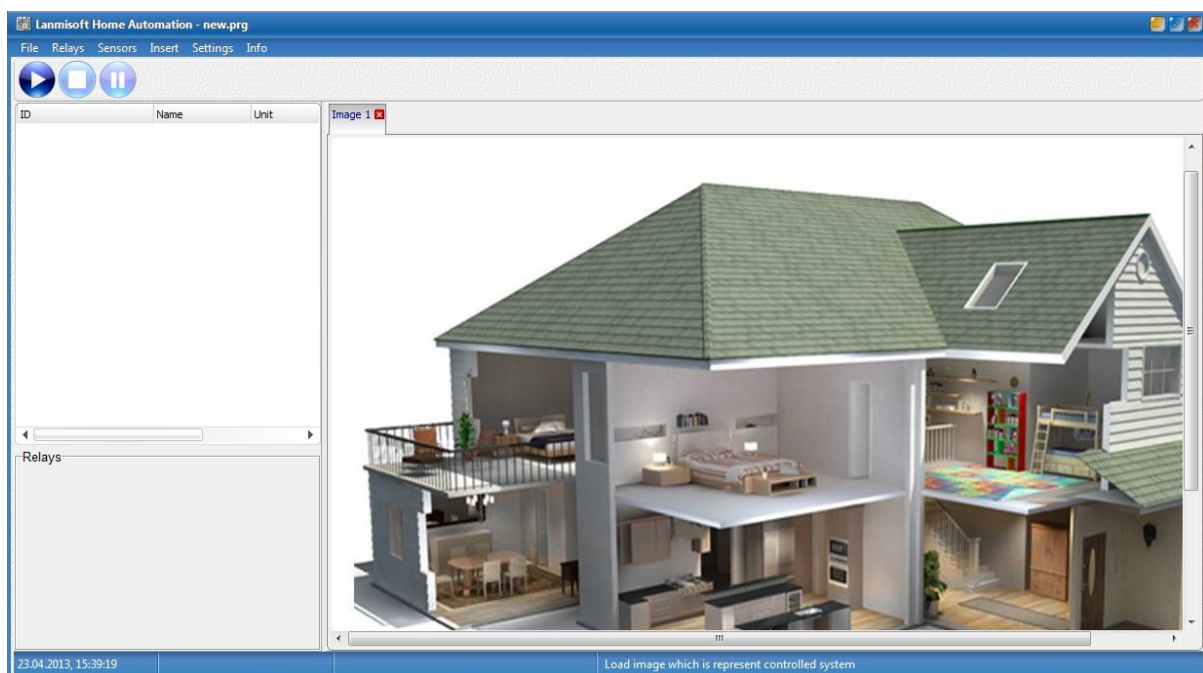
lanmisoft.com/LS_HomeAutomation.exe

If you have issues with the installation, please read this article -

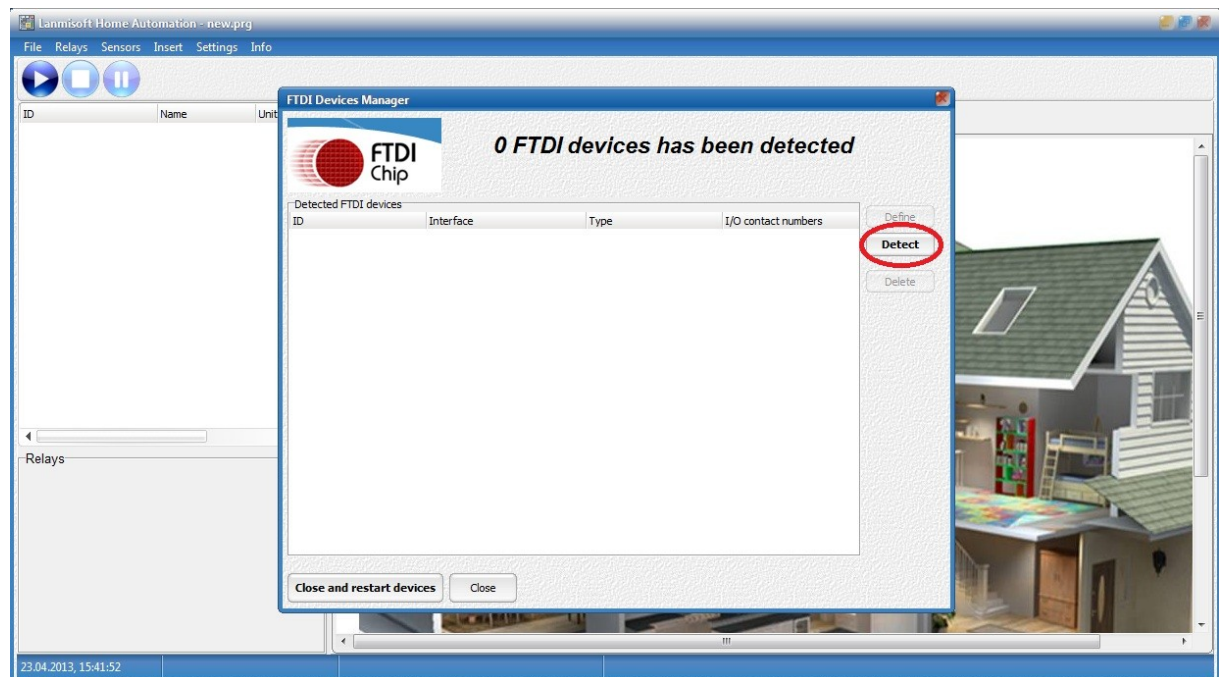
<http://lanmisoft.com/Automation/Help/index.html?setup.htm>

9. Software configuration

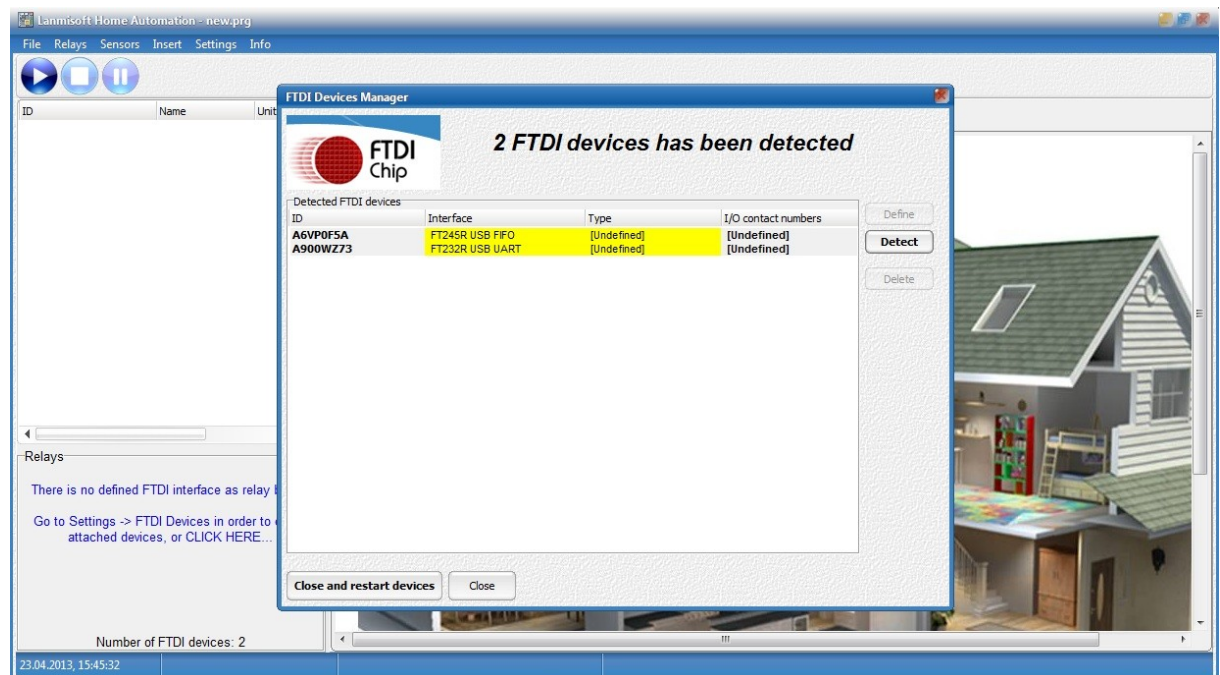
1.1.Run the Home Automation Software.



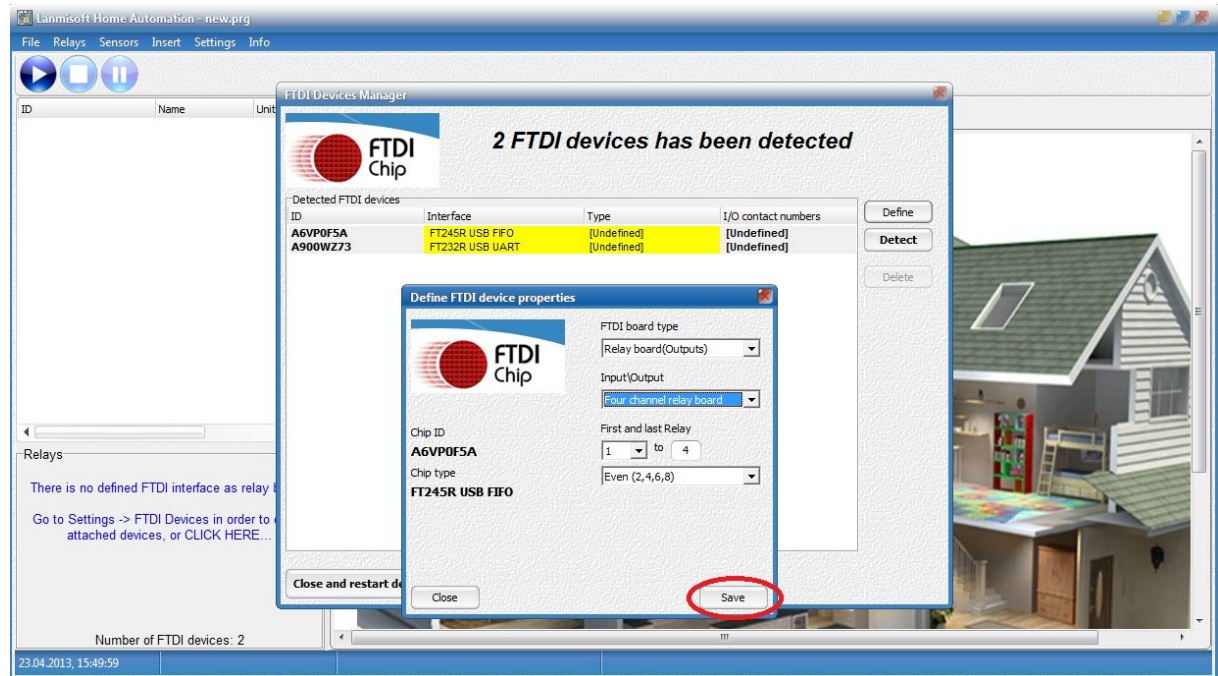
1.2. Detect the FTDI devices. Click Settings -> FTDI Devices -> Detect



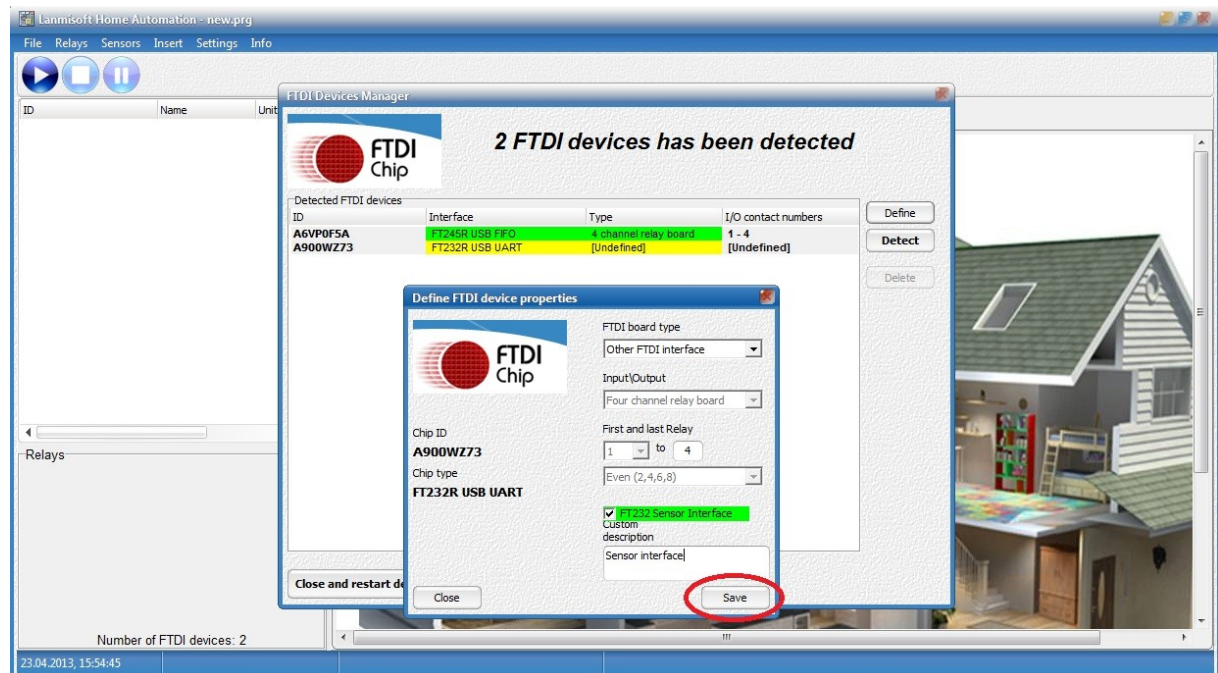
1.3. Check how many FTDI devices are connected. Normally you will have 2 FTDI devices (The USB One Wire adapter - FT232R USB UART and USB Relay Board - FT245R USB FIFO). We use them for first time, that's why they are in yellow.



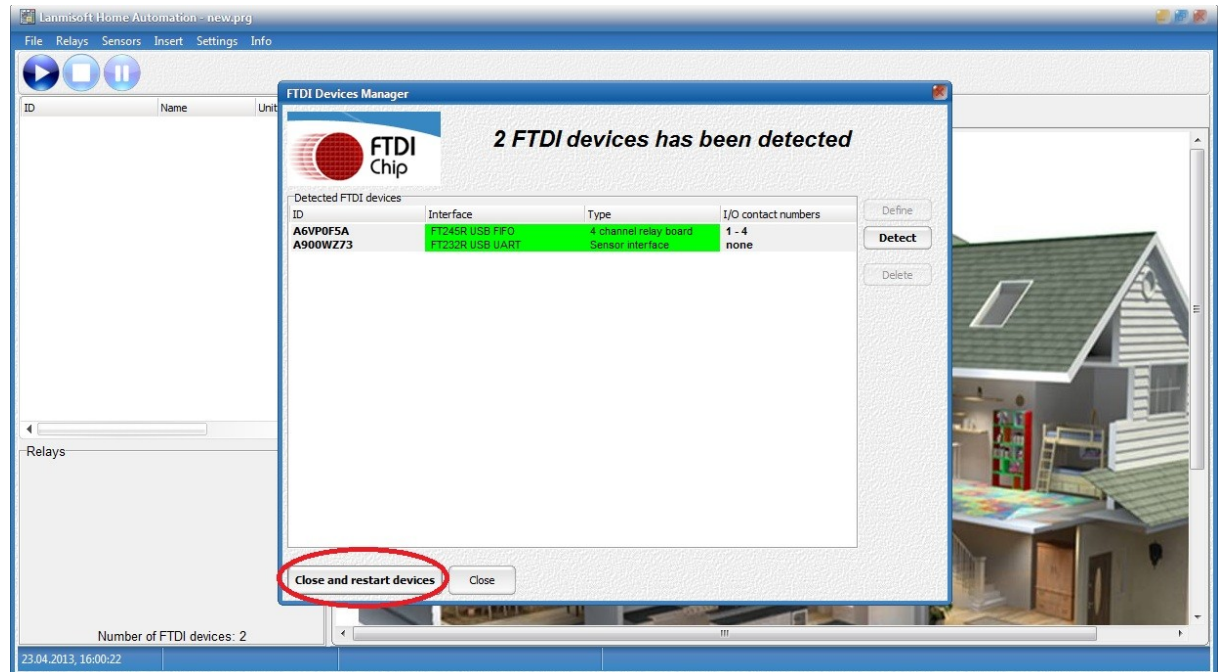
1.4. Configure the USB 4 Relay Board. The next step is to configure each FTDI Device. We start with the FT245R FIFO. This is USB 4 Relay Board, so that's why we must do the following settings:



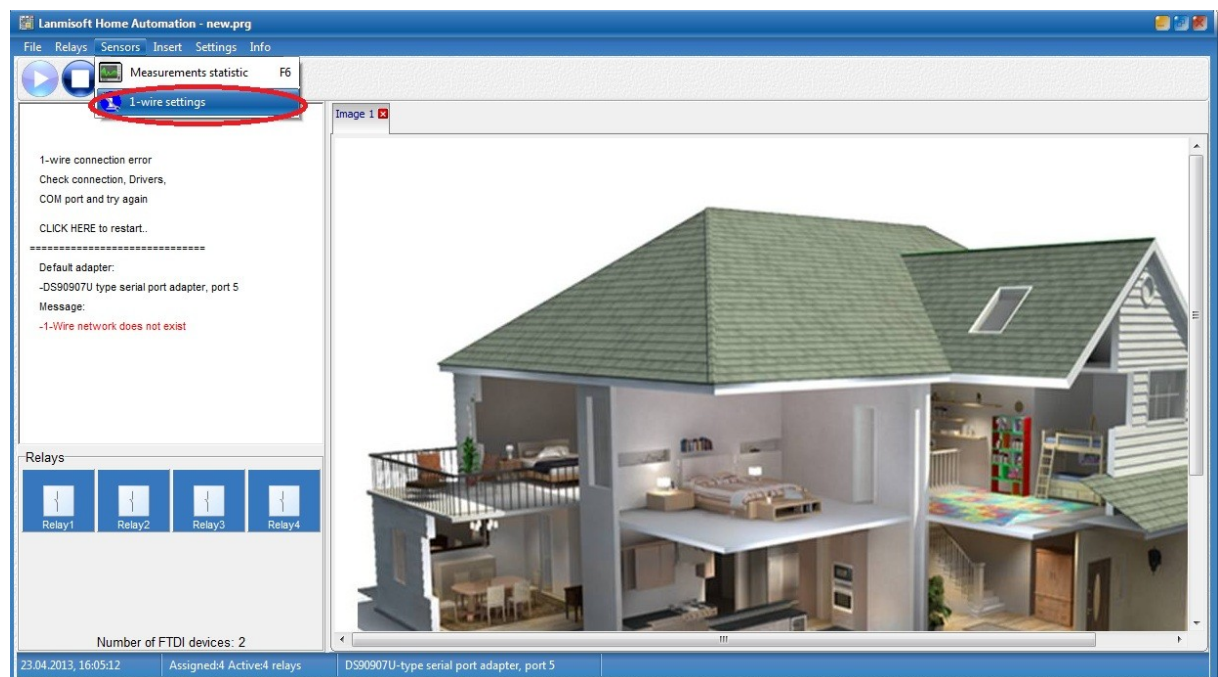
1.5. Configure the USB One Wire adapter. The FT232R USB UART chip is USB One Wire adaptor, so we must do the following settings:



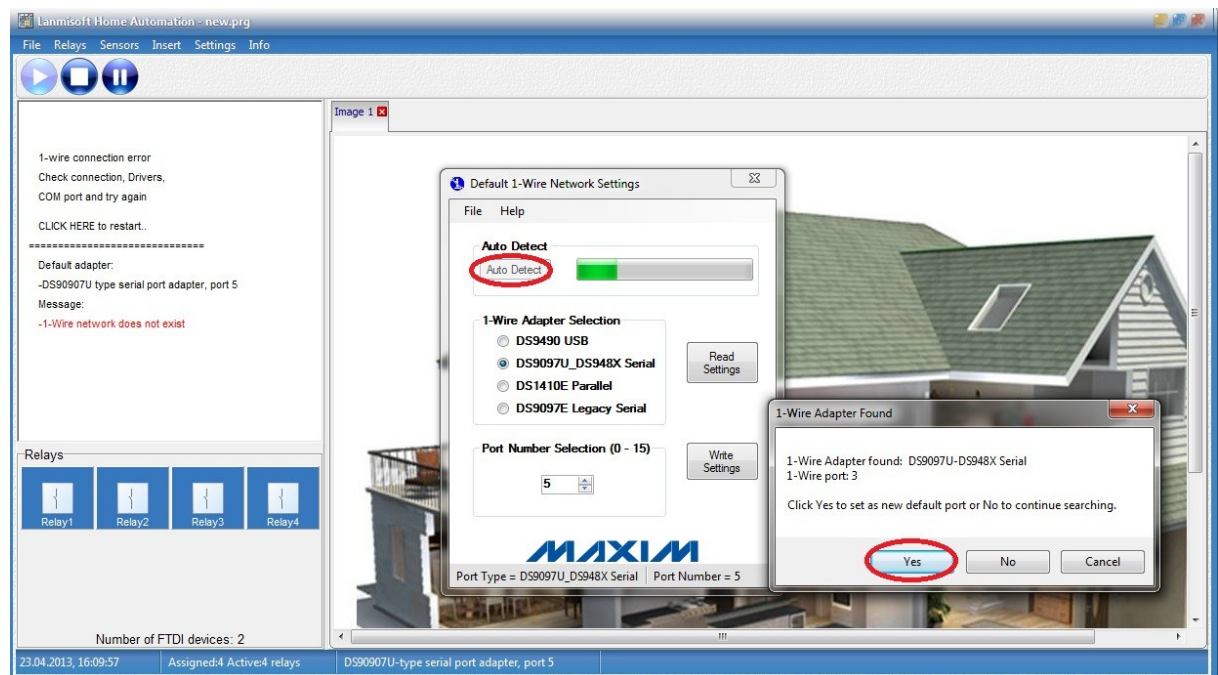
1.6. Restart the devices. Finally you should have the both FTDI devices defined in the following way. They are already in green. Just in case, click "close and restart the devices".



1.7. Adjust the sensor(s). At this moment the 4 relays are already placed and ready to be used. However we still don't see the DS18S20 sensor. For that purpose we must click Sensors -> 1-wire settings.



- 1.8. Detect the USB One Wire Adapter (shown as DS9097U). The software runs the Default 1-Wire Settings window. Click "Auto Detect" and after several seconds the Denkovi USB One Wire Adapter should be recognized as DS9097U. Click "Yes" button. After that click over the sensor window so you can refresh it. Here it is shown on Com Port 3. The maximum is 15, so be sure the USB One Wire Adapter is with Com Port Number less than 15.



- 1.9. Start the process. Click "Play" button so the automation process can start.

